

NALP2 Polyclonal Antibody
Purified Rabbit Polyclonal Antibody (Pab)
Catalog # AP58498**Specification**

NALP2 Polyclonal Antibody - Product Information

Application	WB, IHC-P, IHC-F, IF, ICC, E
Primary Accession	O9NX02
Reactivity	Rat
Host	Rabbit
Clonality	Polyclonal
Calculated MW	120515

NALP2 Polyclonal Antibody - Additional Information**Gene ID** 55655**Other Names**

NACHT, LRR and PYD domains-containing protein 2, Nucleotide-binding site protein 1, PYRIN domain and NACHT domain-containing protein 1, PYRIN-containing APAF1-like protein 2, NLRP2, NALP2, NBS1, PAN1, PYPAF2

Dilution

WB~~1:1000<br \>IHC-P~~N/A<br \>IHC-F~~N/A<br \>IF~~1:50~200<br \>ICC~~N/A<br \>E~~N/A

Format

0.01M TBS(pH7.4), 0.09% (W/V) sodium azide and 50% Glyce

Storage

Store at -20 °C for one year. Avoid repeated freeze/thaw cycles. When reconstituted in sterile pH 7.4 0.01M PBS or diluent of antibody the antibody is stable for at least two weeks at 2-4 °C.

NALP2 Polyclonal Antibody - Protein Information**Name** NLRP2**Synonyms** NALP2, NBS1, PAN1, PYPAF2**Function**

Suppresses TNF- and CD40-induced NFkB1 activity at the level of the IKK complex, by inhibiting NFkBIA degradation induced by TNF. When associated with PYCARD, activates CASP1, leading to the secretion of mature pro-inflammatory cytokine IL1B. May be a component of the inflammasome, a protein complex which also includes PYCARD, CARD8 and CASP1 and whose function would be the activation of pro-inflammatory caspases.

Cellular Location

Cytoplasm

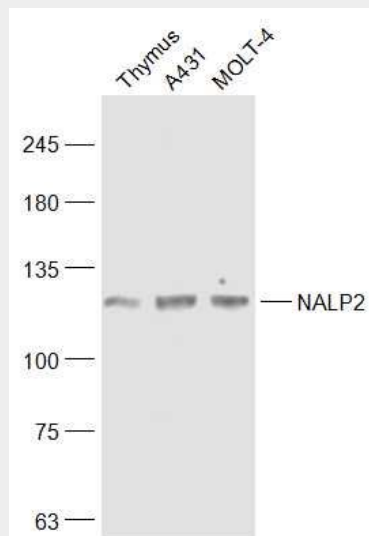
Tissue Location

Expressed at high levels in lung, placenta and thymus and at lower levels in ovary, intestine and brain (PubMed:15456791). Highly abundant in oocytes and early embryos, however poorly expressed in somatic tissues such as brain, kidney, liver and spinal cord (PubMed:30877238).

NALP2 Polyclonal Antibody - Protocols

Provided below are standard protocols that you may find useful for product applications.

- [Western Blot](#)
- [Blocking Peptides](#)
- [Dot Blot](#)
- [Immunohistochemistry](#)
- [Immunofluorescence](#)
- [Immunoprecipitation](#)
- [Flow Cytometry](#)
- [Cell Culture](#)

NALP2 Polyclonal Antibody - Images**Sample:**

Thymus(Mouse) Lysate at 40 ug

A431(Human) Cell Lysate at 30 ug

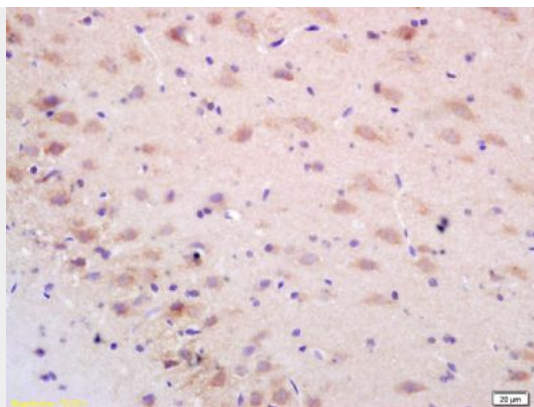
Molt-4(Human) Cell Lysate at 30 ug

Primary: Anti-NALP2 (bs-6717R) at 1/500 dilution

Secondary: IRDye800CW Goat Anti-Rabbit IgG at 1/20000 dilution

Predicted band size: 117 kD

Observed band size: 117 kD



Tissue/cell: rat brain tissue; 4% Paraformaldehyde-fixed and paraffin-embedded;

Antigen retrieval: citrate buffer (0.01M, pH 6.0), Boiling bathing for 15min; Block endogenous peroxidase by 3% Hydrogen peroxide for 30min; Blocking buffer (normal goat serum,C-0005) at 37°C for 20 min;

Incubation: Anti-NALP2/PAN1/PYPAF2 Polyclonal Antibody, Unconjugated(bs-6717R) 1:200, overnight at 4°C, followed by conjugation to the secondary antibody(SP-0023) and DAB(C-0010) staining